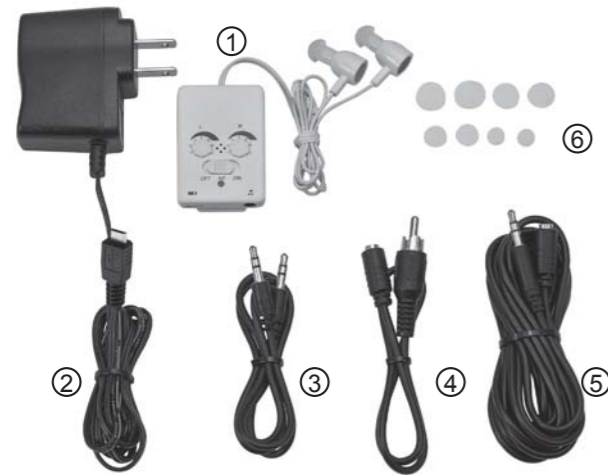


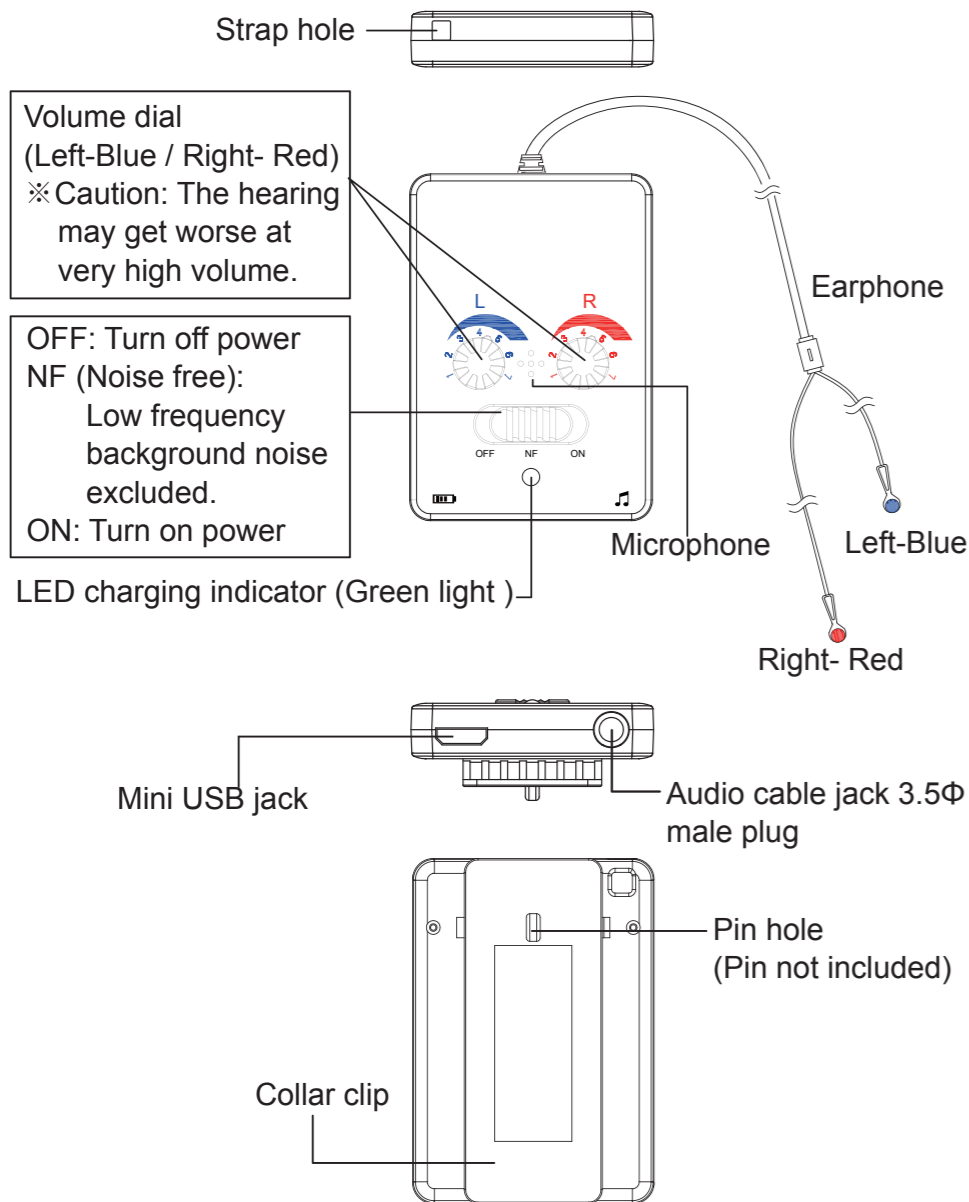
PURE-AUDIOLOGY POCKET HEARING AID

COMPLETE PARTS LISTING

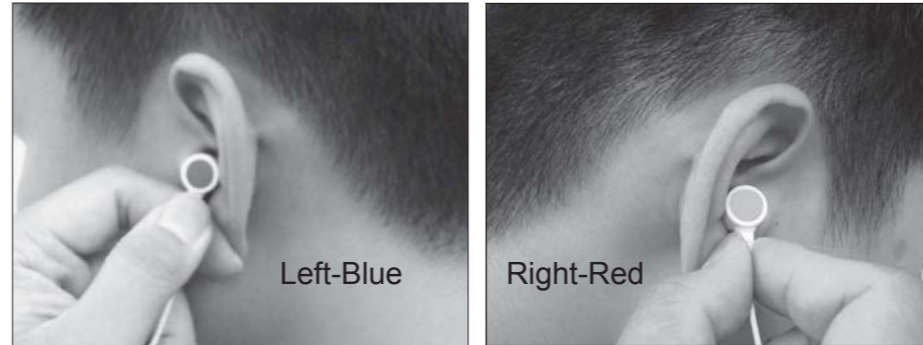


- ① Hearing Aid with Earphone (Left-Blue / Right-Red) x 1
 - ② AC Adapter x 1
 - ③ Audio Cable x 1
 - ④ RCA Cable
 - ⑤ Extension Cable (3m)
 - ⑥ Ear Cap (2 pcs for L, M, S and Mini size)
- ※ An extra pair of M size ear caps on earphone.

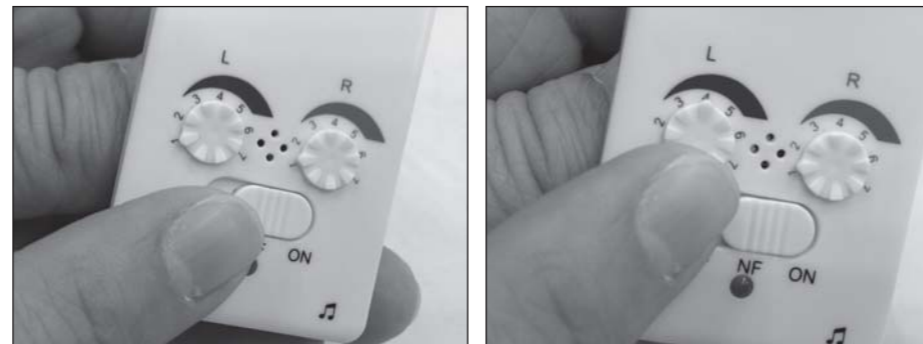
HEARING AID FEATURES



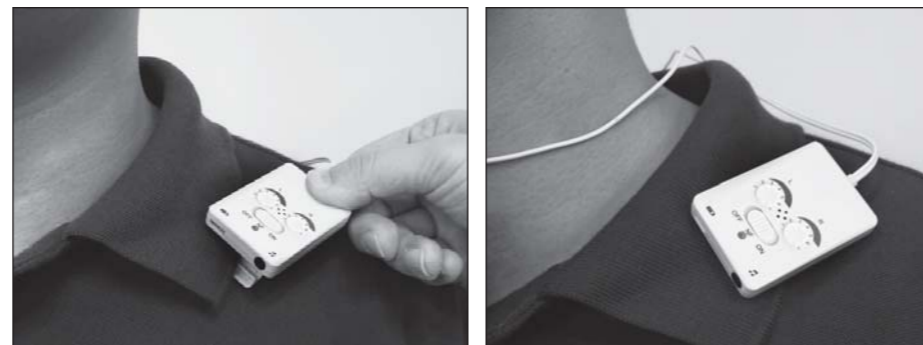
OPERATION INSTRUCTIONS



1. Insert Right (Red) earphone into the ear canal and place the wire around the neck. Insert Left (Blue) earphone into the canal directly. Two earphones need to be inserted tightly to avoid feedback noise.



2. Turn the power on. The volume dial allows you to turn the volume to your desired numerical values which are showed in a front panel display. Setting 1 is min. sound while setting 7 is max.

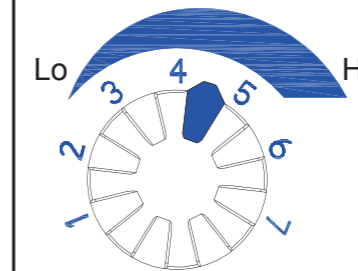


3. Clip the hearing aid on the collar to avoid microphone moving and intensify sound effect. Covering the microphone hold will result in poor sound quality.

4. Completed. (Hearing aid also can be clipped on your pocket.)



ADJUSTING THE VOLUME

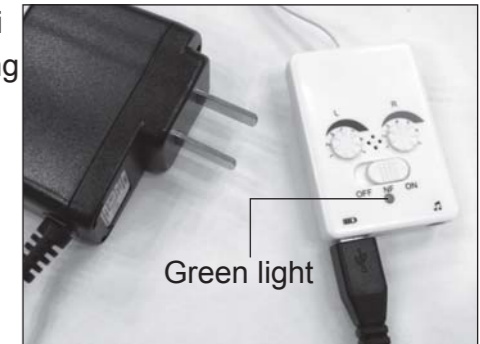


The Volume Dial allows you to adjust the volume. Setting 1 is the lowest, while setting 7 is the highest. Rotate the dial to the desired volume level.

※ Caution: It might cause further hearing damage at inappropriate volume level.

HOW TO CHARGE

1. Connect AC adapter to the mini USB jack. (You can use any mini USB cable to charge your hearing aid.)
 2. LED charging indicator will be lit up when charging.
 3. The full charge takes about 5 hours.
- ※ To extend usage life of the battery, turn it off when not in use.



MUSIC RECEIVER FUNCTION

The hearing aid could connect to other sound sources. Plug the audio cable in the jack and wear the earphone. Then you can enjoy music easily. (Audio cable, extension cable and RCA cable are included. Extension cable can be used if needed)



Plug the audio cable (3.5Φ) into the jack and music device.

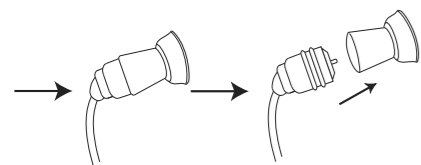


Plug the audio cable (3.5Φ) into the jack and RCA cable. Then Lotus socket connects with AV socket.

EAR CAP REPLACEMENT

The ear cap is disposable. If the ear cap can no longer be properly cleaned, or if it has any tears or damage, then it is time to replace the ear cap.

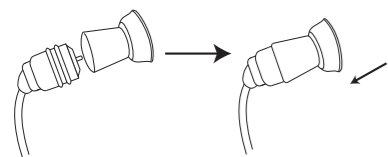
1. Remove the old ear cap.



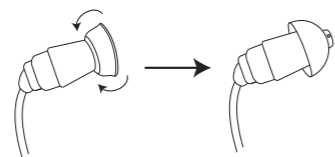
2. Turn up the rim of the new ear cap.



3. Insert new ear cap on hearing aid.



4. Turn the rim of the new ear cap down.



After replacing the ear cap and before and after each use, ensure that the ear cap is securely attached to the hearing aid.

NOTICE

* Please don't try other methods written out of the manual we enclosed. It may cause accidents or breakdowns.

* Please don't let infants or people lacking the ability of self-expression. It may cause accidents or troubles.

* Please don't use it while you are sleeping. It may cause accidents or physical discomforts.

* Please don't wear it and do the fierce exercise at the same time. It may cause a breakdown or damage when you dropped it accidentally.

* Please don't use this product together with your mobile phone. The sound will be lower or other disturbance caused because of the effect of noise resulted from radio wave.

* Please don't moisten it. If you do, please have it inspected. Further, please don't wear it while taking shower or washing your hair. Additionally, please be cautious to keep it dry while washing your face or using hair spray. Or it may cause breakdowns.

Note: Concerning the disposal of hearing aids or batteries, please obey the regulations of the local administration.

TROUBLESHOOTING

1. Is power on?

Turn on the power switch.

2. Is the ear cap blocked with wax or debris?

Clean up the ear cap after using the hearing aid.

3. Is the hearing aid out of power?

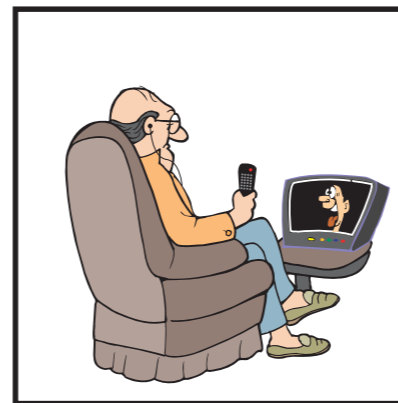
Place connect AC adapter or mini USB cable to charge the hearing aid.

4. We suggest a person with a hearing loss periodically have a medical evaluation by a licensed physician in diseases of the ear after using hearing aids.

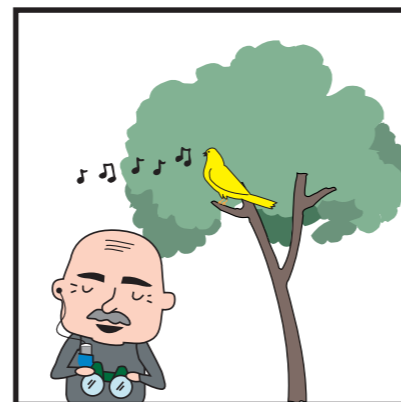
IN THE SITUATION LIKE



1. Having Conversations:
Keeping the average volume is fine.



2. Watching TV :
Let's enjoy your favorite program! You won't interfere with family at all.



3. Bird-watch:
Clearly hear "Chirrup" in the distance.



4. Listening to Speech:
Even sitting behind, you have no trouble listening a whole speaking.



Very Important Notice

~ Recharge Any Time~

For properly use under normal condition, it is able to be recharging & discharging for 500 times.

In order to extend usage life of the rechargeable battery, here we strongly recommend users to charge the hearing aid whenever you don't use it.

To charge your hearing aid whenever you don't use it will be helpful to maintain the rechargeable battery & extend the usage life for recharging & discharging up to 500 times.

According to the character of rechargeable battery, when it is almost run out of power, the sound from hearing aid will reduce. Please don't treat it as any defective, just put your hearing aid back to the charging case or use the AC adapter to recharge your hearing aid.

Specification

For Slight, Moderate, Severe and Very Severe Hearing Loss Use

Standard Frequency: 1600Hz

Max. Output Sound Level Gain : 65 ± 5dB

Highest Sound Pressure Level for Input SPL 90dB : 140 ± 5dB

Built-in Rechargeable Battery Current : < 2mA

Continuous Use : More than 20 hours per charge

Operating Temperature / Humidity : +10°C ~ +40°C , 30~85% RH

Storage Temperature / Humidity : -10°C~ +60°C , 30~85% RH

Size (L/W/H) : <Main unit> Approx. 35 x 8 x 50 mm

Weight : <Hearing Aid> Approx. 16.5 g

Material : <Hearing Aid> <AC Adapter> ABS / <Ear Cap>Silicone