

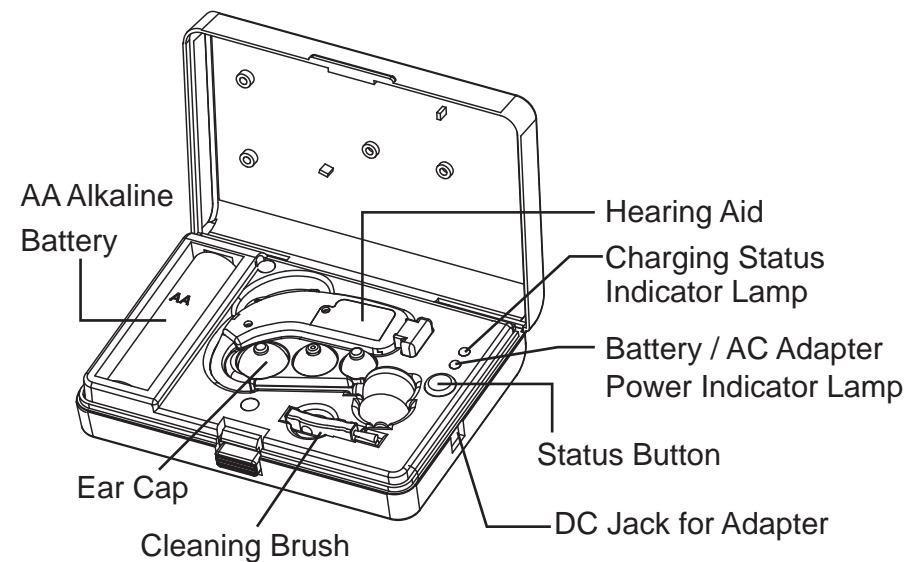
THE CONTENT OF COMPONENT



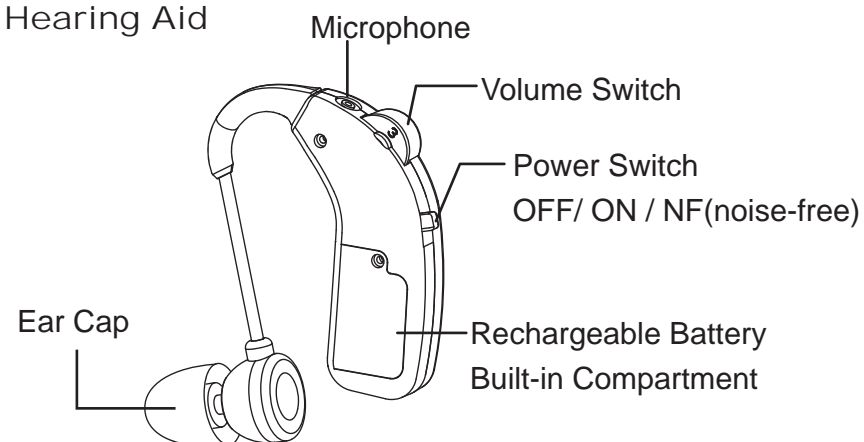
- ① Charging Case
- ② AC Adapter
- ③ AA Alkaline Battery
- ④ Hearing Aid
- ⑤ Ear Cap (two types – L, M, S and Mini)
- ⑥ Cleaning Brush

DIAGRAM

■ Charging Case



■ Hearing Aid



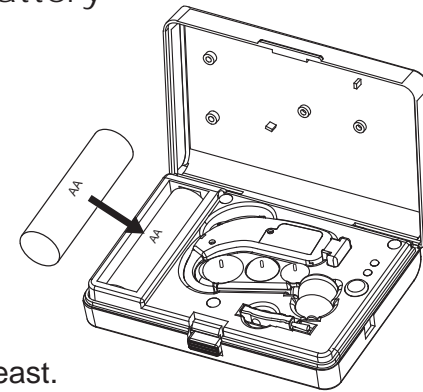
SETTING METHOD OF HEARING AID

- OFF: The power off
- ON : Its 10-second delay on function will perfectly avoid having feedback noise while wearing it.
- NF (Noise-Free) : Low frequency background noise excluded
By state of the noisy environment, please set this function to hear in comfort.

CHARGING

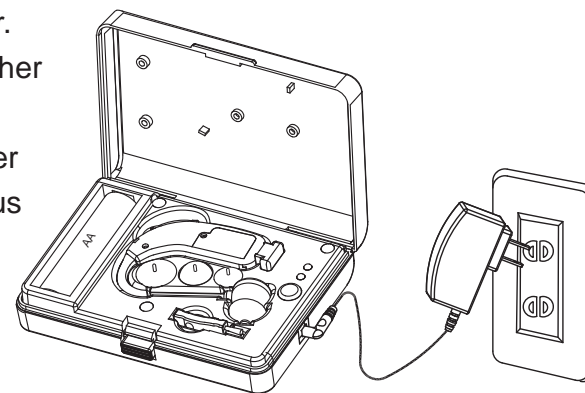
■ The occasion of using Battery to recharge

1. Install one attached battery in the compartment.
2. Please observe whether the illuminant of the lamp is "GREEN" after you push on the status button.
3. Please charge it for 7 hours at least.

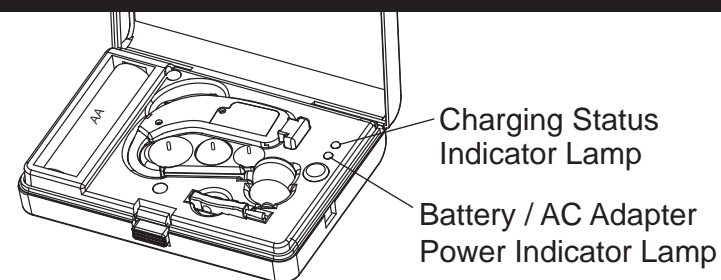


■ The occasion of using AC Adapter to recharge

1. Insert the AC Adapter.
2. Please observe whether the illuminant of the lamp is "GREEN" after you push on the status button.
3. Please charge it for 5 hours at least.



CHARGE STATUS



Charging Status Indicator	Green light lit	Charging normally.
	Not Lit	The charge is completed. Place Hearing aid in charging case improperly
Battery / AC Power Indicator	Green light lit	Input power is sufficient.
	Red light lit	Input power is low. Insert new AA battery or use the AC adapter.
	Not Lit	

MAINTENANCE METHOD

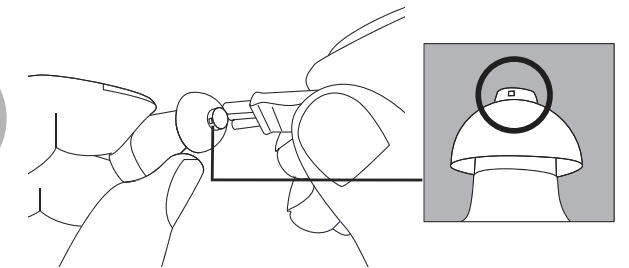
1. Please clean your ear by using cotton swabs before you wear the hearing aid. If the hollow of sound is clogged by your earwax, the quality of volume will be inferior.

Before each use



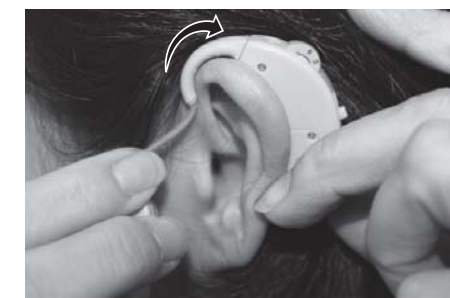
2. Please clean out the earwax adhered on the hearing aid. The easiest location on which earwax to be stuffed is around the hollow of sound.

After each use



OPERATING INSTRUCTION

※ Notice: Its 10-second delay on function will perfectly avoid having feedback noise while wearing it.



1. Wear Hearing Aid on ear properly.



2. Insert ear cap into ear canal tightly to avoid feedback noise.



3. Turn on the power or switch to "NF". If there is feedback noise please change to larger ear cap.



4. Rotate the volume switch to the desired volume level.

TROUBLE SHOOTING

1. Is power on?

Turn on the power switch.

2. Is the Ear Cap blocked with wax or debris?

Clean the Ear Cap using the provided Cleaning Brush.

3. Is the battery dead?

Place the Hearing Aids in the Charging Case and ensure it is charging by battery or AC adapter.

4. We suggest a person with a hearing loss periodically have a medical evaluation by a licensed physician in diseases of the ear after using hearing aids.

NOTICE

- To extend usage life of the rechargeable battery, fully charge the Hearing Aids and then off when not in use for a long period of time.
- Clean your ears with cotton swabs and remove any earwax adhered on the Hearing Aids and Ear Cap Nipple.
- With proper care, the rechargeable battery can last for up to and beyond 500 charge cycles.
- When the rechargeable battery is low on the Hearing Aid, the sound is becoming smaller. It means the battery is low and needs to be charged.
- Keep this product away from infants, children and pets.
- Prior to first use, read instructions carefully to ensure proper operation, care and handling of your Hearing Aids.
- Don't use this product under the following conditions: operating a mobile phone, sleeping, showering, washing your hair /face or swimming, any vigorous exercise to avoid or damage to yourself or to the Hearing Aids.



Very Important Notice

~ Recharge Any Time~

For properly use under normal condition, it is able to be recharging & discharging for 500 times.

In order to extend the usage life of the rechargeable battery, here we strongly recommend users to charge the hearing aid whenever you don't use it.

Please note that there is no need to recharge your hearing aid until it is almost out of power. To charge your hearing aid whenever you don't use it will be helpful to maintain the rechargeable battery & extend the usage life for recharging & discharging up to 500 times.

According to the character of rechargeable battery, when it is almost run out of power, the sound from hearing aid will reduce. Please don't treat it as any defective, just put your hearing aid back to the charging case or use the AC adapter to recharge your hearing aid.

SPECIFICATION

General Title of Commodity : BTE Rechargeable Hearing Aid

Purpose & Function : For assisting people of hearing obstacle

Standard Frequency : 1600Hz

Max. Output Sound Level Gain : 50 ± 5dB

Highest Sound Pressure Level for Input SPL 90dB : 145dB ± 5dB

Equivalent Input Noise Level : Below 29dB

Built-in Rechargeable Battery Current : < 3mA

Rechargeable Time : Up to 500 times in total

Continuous Use : 12-16 hours when full charged

Operating Temperature / Humidity : +10°C ~ +40°C, 30% ~ 85% RH

Storage Temperature / Humidity : -10°C ~ +60°C, 30% ~ 85% RH

Size : <Hearing Aid> 55(L) x 40(W) x 10(H) mm

<Charging Case> 100(L) x 65(W) x 22(H) mm

Weight : <Hearing Aid> 7.6g / <Charging Case> 58.4g

Material : <Ear Cap> silicone

<Hearing Aid> / <Charging Case> / <AC Adapter> ABS

IN THE SITUATION LIKE

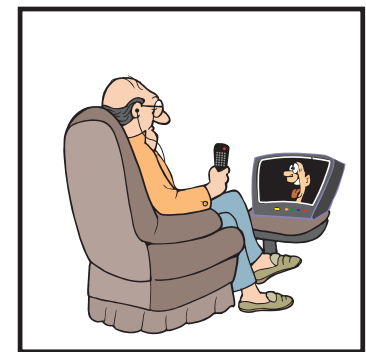
1. Having Conversations:

Keeping the average volume is fine.



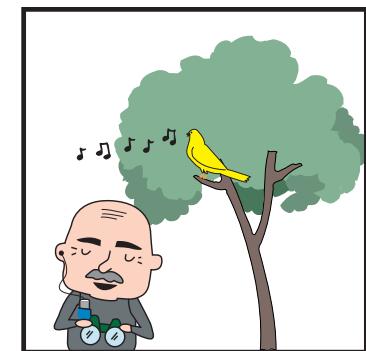
2. Watching TV :

Let's enjoy your favorite program! You won't interfere with family at all.



3. Bird-watch:

Clearly hear "Chirrup" in the distance.



4. Listening to Speech:

Even sitting behind, you have no trouble listening a whole speaking.

